

Granny Square month 2021 CAL



Day 15

Instagram [@made.by.hem](https://www.instagram.com/made.by.hem)

What you need:

Knitcraft Cotton Blend Plain:

- White (Yarn A); Mustard (Yarn B); Hot Pink (Yarn C), Black (Yarn D), Light Blue (Yarn E) 1 ball of each.
- 5mm crochet hook
- Embroidery needle
- Scissors

Abbreviations

st(s) - stitch(es)
ss - slip stitch
ch - chain stitch
dc - double crochet
rep - repeat
YA - Yarn A
YB - Yarn B
YC - Yarn C
YD - Yarn D
YE - Yarn E

Tension

Approx. 10cm by
10cm - 17 sts by
19 rows in dc
tapestry crochet

Dimensions

20cm x 20cm
including border

Pattern notes

This pattern is worked bottom up. Use the chart and written instructions to create the tapestry crochet design.

Tapestry crochet

Tapestry crochet enables you to create coloured patterns within your crochet work. When changing colour pick up the new yarn colour on the last yarn over from the previous stitch.

For example, to work a stitch in YA (White) followed by a stitch in YB (Mustard):

With YA, insert hook into next stitch and pull up a loop, drop YA, yarn over with YB, and pull through both loops. You are now ready to work your next stitch with YB. (See Photos 1-4)



When not being used to work the current stitch, Yarn A is always carried within your work by working the new stitch(es) over the top.

All other yarn colours (Yarns B, C and D) should be released to the WS of the work once the final stitch of that colour as been made in each row. The yarns will then be ready to be picked up again in the following row, unless otherwise instructed within the pattern. Photos 5-6 show how to pick the yarn colours up again in the following row.



There are some occasions when Yarn C (Pink) will need to be carried within the stitches, when this colour is required again later in the same row.

Pattern

With YA, ch33

Row 1 (RS): With YA, dc in 2nd ch from the hook (ch 1 does not count as a st), dc across, turn. (32)

Row 2 (WS): Ch1 (does not count as a st throughout), dc across, turn.

Row 3: Ch1, 12dc, with YB 4dc, with YA 16dc, turn.

Row 4: Ch1, 18dc, with YB 1dc, with YA dc13,turn.

Row 5: Ch1, 13dc, with YB 1dc, with YA dc18, turn.

Row 6: Rep Row 4.

Row 7: Ch1, 13dc, with YB 1dc, with YA 2dc, with YB 2dc, with YA 14dc, turn.

Row 8: Ch1, 14dc, with YB 1dc, with YA 3dc, with YB 1dc, with YA 13dc, turn.

Row 9: Ch1, 13dc, with YB 1dc, with YA 3dc, with YB 1dc, with YA 14dc, turn.

Row 10: Ch1, 14dc, with YB 5dc, with YA 13dc, turn.

Row 11: Ch1, 10dc, with YB 4dc, with YA 18dc, turn.

Row 12: Ch1, 18dc, with YB 1dc, with YA 3dc, with YB 1dc, with YA 9dc, turn.

Row 13: Ch1, 10dc, with YB 2dc, with YA 1dc, with YB 1dc, with YA 18dc, turn.

Row 14: Ch1, 18dc, with YB 2dc, with YA 12dc, turn.

Row 15: Ch1, 13dc, with YB 2dc, with YA 17dc, turn. Fasten off YB.

Row 16: Ch1, 15dc, with YC 7dc, with YA 10dc, turn.

Row 17: Ch1, 5dc, with YC 2dc, with YA 2dc, with YC 9dc, with YA 14dc, turn.

Row 18: Ch1, 13dc, with YC 4dc, with YA 2dc, with YC 7dc, with YA 6dc, turn.

Row 19: Ch1, 7dc, with YC 5dc, with YA 1dc, with YC 1dc, with YA 2dc, with YC 4dc, with YA 12dc, turn.

Row 20: Ch1, 11dc, with YC 4dc, with YA 2dc, with YC 3dc, with YA 1dc, with YC 3dc, with YA 8dc, turn.

Row 21: Ch1, 9dc, with YC 7dc, with YA 2dc, with YC 4dc, with YA 10dc turn.

Row 22: Ch1, 9dc, with YC 2dc, with YA 2dc, with YC 9dc, with YA 10dc, turn.

Row 23: Ch1, 11dc, with YC 7dc, with YA 4dc, with YC 1dc, with YA 9dc, turn.

Row 24: Ch1, 9dc, with YC 1dc, with YA 5dc, with YC 5dc, with YA 12dc, turn.

Row 25: Ch1, 21dc, with YC 2dc, with YA 9dc, turn.

Row 26: Ch1, 10dc, with YC 2dc, with YA 20dc, turn.

Row 27: Ch1, 19dc, with YC 2dc, with YA 3dc, with YD 1dc, with YA 7dc, turn.

Row 28: Ch1, 6dc, with YD 1dc, with YA 5dc, with YC 2dc, with YA 18dc, turn.

Row 29: Ch1, 18dc, with YC 1dc, with YA 2dc, with YC 2dc, with YA 2dc, with YB 1dc, with YA 6dc, turn.

Row 30: Ch1, 6dc, with YB 2dc, with YC 4dc, with YA 1dc, with YC 1dc, with YA 18dc, turn.

Row 31: Ch1, 18dc, with YC 6dc, with YB 1dc, with YA 7dc, turn. Fasten off YB.

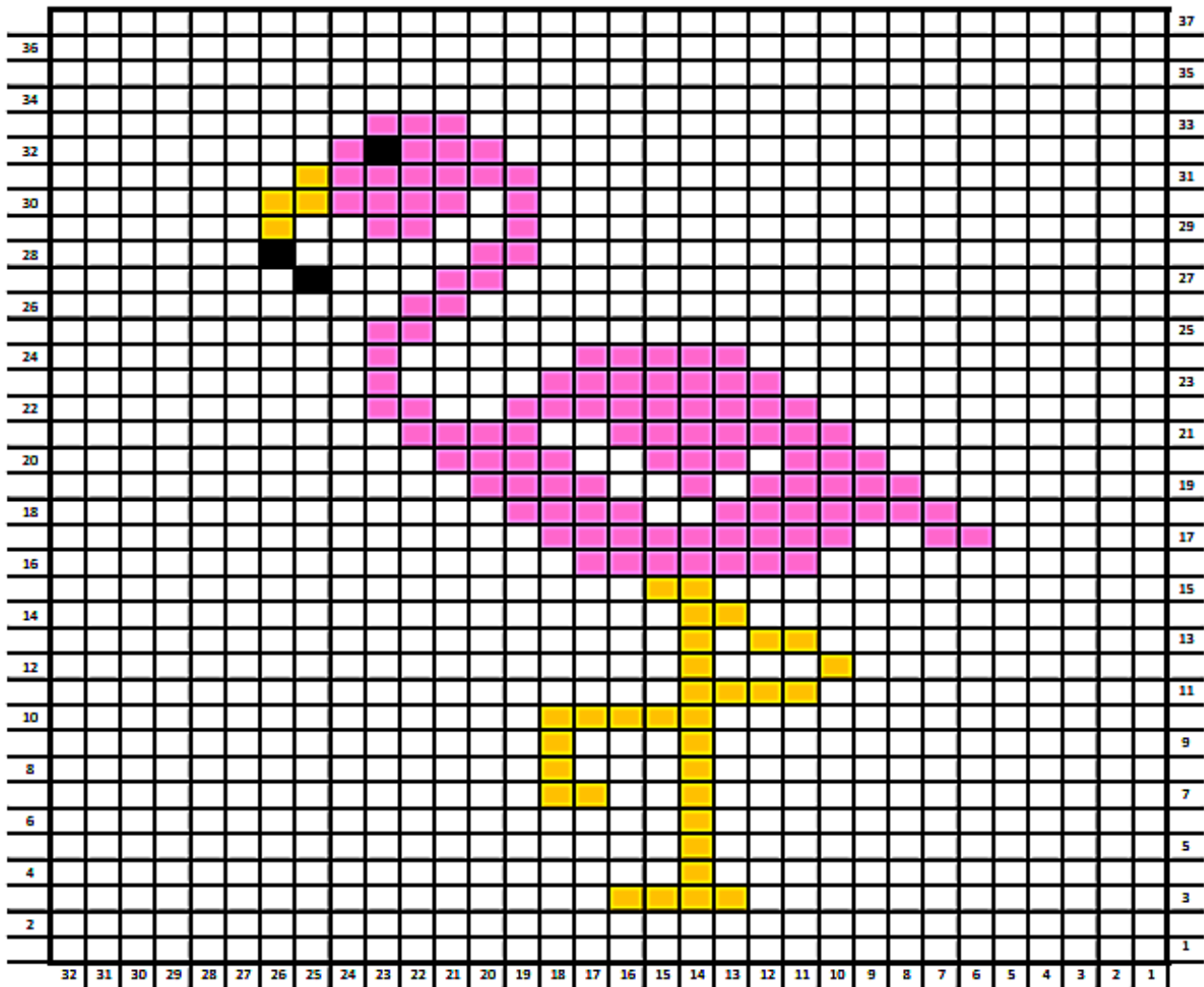
Row 32: Ch1, 8dc, with YC 1dc, with YD 1dc, with YC 3dc, with YA 19dc, turn. Fasten off YD.

Row 33: Ch1, 20dc, with YC 3dc, with YA 9dc, turn. Fasten off YC.

Rows 34-37: Ch1, dc across, turn.

Fasten off and weave in ends. Block before adding the border.

Fabulous Flamingo Tapestry Crochet Chart



KEY

White square	1dc with YA
Yellow square	1dc with YB
Pink square	1dc with YC
Black square	1dc with YD

Boarder

With RS facing, ss YE to top right-hand corner, 1dc in same st. Dc across the top, (1dc, ch1, 1dc) in corner st, 1dc in each row end down the side, (dc 1, ch1, 1dc) in corner, dc across the bottom, (1dc, ch1, 1dc) in corner st, 1dc in each row end up the side, to finish (1dc, ch1) in corner space, ss to top of first dc. Fasten off and weave in the ends. Block again if necessary.

You've now completed
your granny square!

Don't forget to head back to the
blog where a new square will be
released at 10 am, Monday to
Saturday.

[https://www.hobbycraft.co.uk/ideas/
knitcraft/granny-square-month-
cal-2021](https://www.hobbycraft.co.uk/ideas/knitcraft/granny-square-month-cal-2021)



SCAN ME



Please note: This pattern is for personal use only.